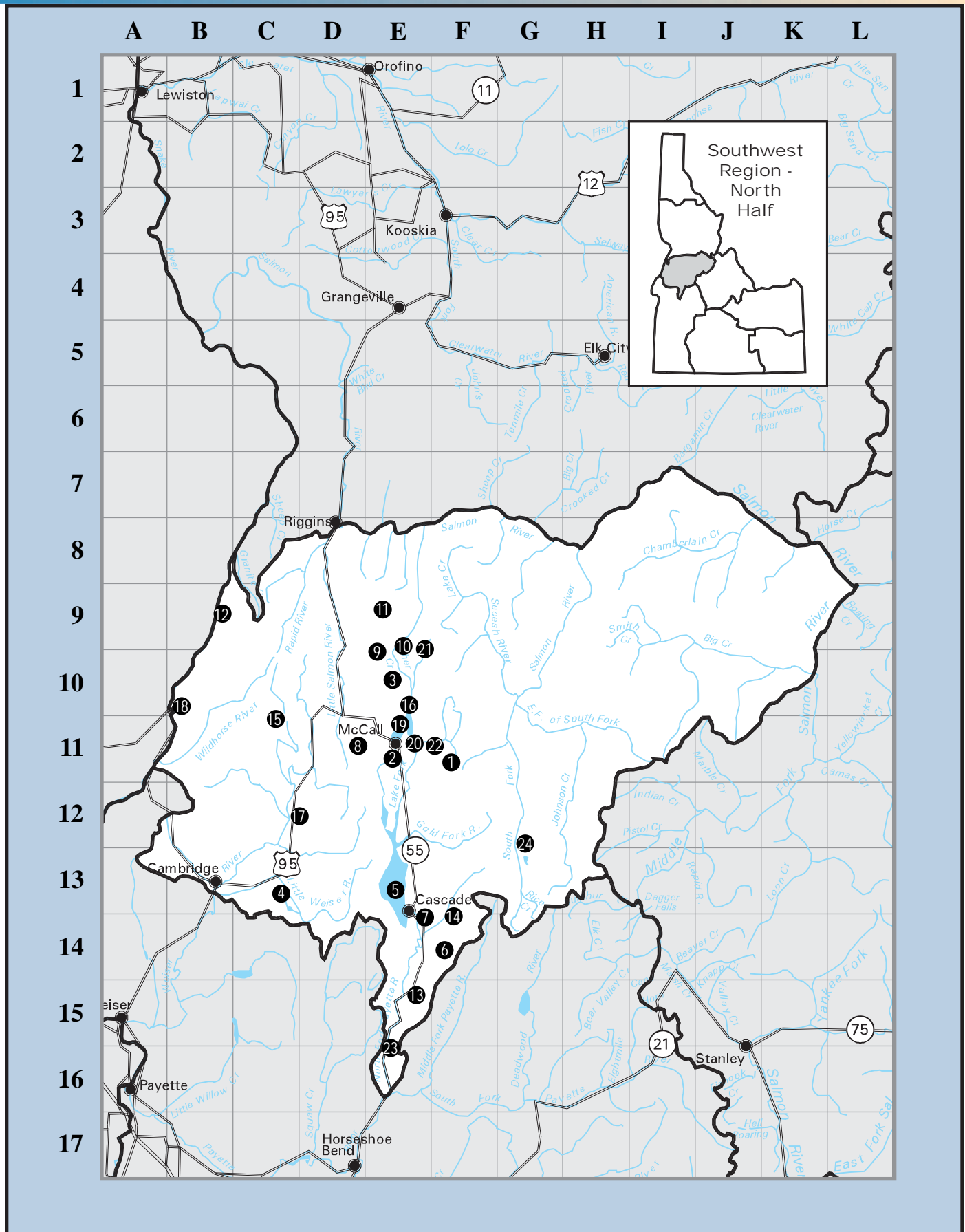


# Southwest Region Fisheries - North Half



# Southwest Region Fisheries - North Half

Lakes and Reservoirs (Size in acres)	Map Location	Cold Water Fish										Warm Water Fish						Facilities									
		Rainbow Trout	Cutthroat Trout	Brown Trout	Brook Trout	Lake Trout	Bull Trout	Chinook Salmon	Kokanee Salmon	Coho Salmon	Steelhead	Tiger Muskie	Mtn. Whitefish	Smallmouth Bass	Largemouth Bass	Crappie	Bluegill	Yellow Perch	Channel Catfish	Bullhead Catfish	Pumpkinseed	Motor Restriction	Boat Ramps	Docks	Toilets	Camping	ADA Access
1. Browns Pond (80)*	F11	◆			◆																						
2. Browns (Airport) Pond (3)	E11	◆																									
3. Brundage Reservoir (340)	E10	◆	◆																						◆	◆	
4. C. Ben Ross Reservoir (350)	C13												◆	◆	◆								◆	◆	◆		
5. Cascade Reservoir (30,000)	E13	◆						◆	◆		◆	◆	◆	◆			◆	◆	◆	◆			◆	◆	◆	◆	◆
6. Corral Creek Reservoir (44)	F14	◆																									
7. Fischer Pond (2)*	F14	◆																									◆
8. Fish Lake (30)	D11	◆																							◆	◆	
9. Goose Lake (520)	E10	◆			◆																		◆		◆	◆	
10. Granite Lake (195)	E10	◆	◆																								
11. Hazard Lake (120)	E9	◆			◆																				◆	◆	
12. Hells Canyon Reservoir (2,500)	B9	◆							◆			◆	◆	◆	◆	◆	◆	◆	◆				◆	◆	◆	◆	
13. Herrick Reservoir (30)	E15	◆																									
14. Horsethief Reservoir (275)*	F14	◆		◆																				◆	◆	◆	◆
15. Lost Valley Reservoir (800)*	C11	◆			◆																		◆	◆	◆	◆	
16. Northwest Passage Pond (1)*	E10	◆																							◆	◆	◆
17. Ol' McDonald Pond (1)*	D12	◆																							◆		
18. Oxbow Reservoir (1,500)	B10	◆										◆	◆	◆	◆	◆	◆	◆	◆				◆	◆	◆	◆	
19. Payette Lake (5,300)	E11	◆			◆			◆															◆	◆	◆	◆	◆
20. Payette Lake, Little (1,400)	E11	◆						◆			◆												◆	◆	◆	◆	
21. Payette Lake, Upper (300)*	E9	◆			◆																		◆		◆	◆	
22. Rowlands (Scout) Pond (5)*	F11	◆																							◆	◆	
23. Tripod Reservoir (8)	E16	◆																							◆	◆	◆
24. Warm Lake (640)	G12	◆			◆	◆	◆		◆			◆											◆	◆	◆	◆	
<b>Rivers and Streams</b>																											
Payette River, Gold Fork	F12	◆			◆	◆																			◆	◆	
Payette River, Lake Fork	F11	◆			◆																				◆	◆	
Payette River, North Fork	E16	◆			◆						◆	◆													◆	◆	
Salmon River, East Fork of South Fork	G11	◆	◆		◆	◆	◆		◆		◆														◆	◆	
Salmon River - Secesh River	F9	◆	◆		◆	◆	◆		◆		◆														◆	◆	
Salmon River, South Fork	G12	◆	◆		◆	◆	◆		◆		◆														◆	◆	
Salmon River - Little Salmon to South Fork	E8	◆	◆			◆	◆		◆		◆	◆											◆		◆	◆	
Salmon River, Little	D9	◆			◆	◆	◆		◆		◆														◆	◆	
Weiser River	C13	◆			◆						◆	◆													◆	◆	
Weiser River, Middle Fork	C12	◆			◆						◆														◆	◆	
Weiser River, East Fork	D12	◆			◆	◆																			◆	◆	

\* Family Fishing Waters

For more than 25 years, Idaho's citizens  
**have helped protect Idaho's fish and wildlife**  
**Citizens Against Poaching**  
 To report wildlife violations in Idaho, call:  
 1-800-632-5999

